

Turbo Turbidity Sensor

WITH DATALOGGING

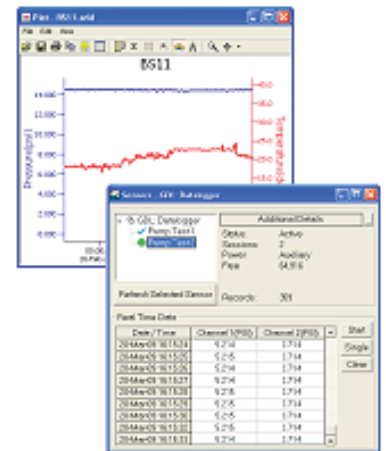


APPLICATIONS

- Monitoring streams and rivers
- Monitoring water storage bodies, including stratification studies
- Intermediate and final effluent treatment monitoring
- Hydrological run-off studies
- Ground and bore water analysis
- Drinking water filtration efficiency
- Industrial process monitoring
- Sludge and dredge monitoring

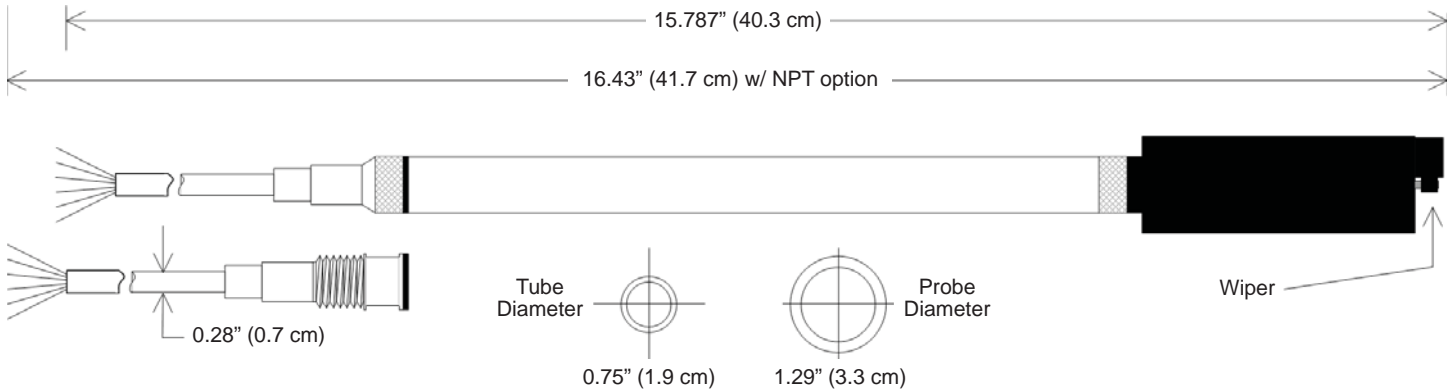
Features

- Measures and records turbidity and temperature
- Modbus® RTU (RS485) and SDI-12 interface — *great flexibility*
- 260,000+ record non-volatile memory — *no data loss in the event of a power failure*
- Wireless connectivity — *radios and/or cellular*
- Programmable warm-up time
- Free, easy-to-use software
- Replaceable wiper blade



FREE AQUA4PLUS SOFTWARE

- Set up flexible recording sequences
- Retrieve data
- Monitor real time data
- View collected data — *tables & graphs*
- Export to spreadsheets and databases with a click of a button



GENERAL

Length	15.87" (40.3 cm) w/ cable harness 16.43" (41.7 cm) w/ NPT adapter
Probe Diameter	1.29" (3.3 cm)
Tube Material	Acetal & 316 stainless steel or titanium
Probe Material	Composite
Wire Seal Material	Fluoropolymer and PTFE
Submersible Cable	Polyurethane, polyethylene, or FEP available
Terminating Connector	Available
Communication	RS485 Modbus® RTU SDI-12 (ver 1.3)
Direct Modbus Read Output	32-bit IEEE floating point
Internal Math	32-bit floating point
Operating Temp. Range	0° C to 40° C
Storage Temp. Range	-20° C to 50° C

LOGGING

Memory	260,000+ records
Log Types	Variable, user-defined, logarithmic, profiled
Programmable Baud Rate	9600, 19200, 38400
Logging Rate	2x/sec maximum
Software	Complimentary Aqua4Plus
Networking	32 available addresses per junction w/ batching capabilities (up to 255)
File Formats	.xls / .csv / .a4d

SENSOR

Measuring Range	0 – 1000 NTU
Accuracy	2% @ 25° C
Repeatability	± 2% @ 25° C
Temperature Range	0° C to 40° C
Maximum Depth	164 ft (50 m)

POWER

External Power Pack Required	9-15VDC
INW Power Packs available.	
Contact INW for details.	

©2012 Instrumentation Northwest, Inc. All rights reserved. INW and AquiStar are registered trademarks of Instrumentation Northwest. Modbus is a registered trademark of Schneider Electric. Information in this document is subject to change without notice. Doc# 6D0120r3 07/12

SALES & SERVICE LOCATIONS

8902 122nd Avenue NE
Kirkland, WA 98033 USA
425-822-4434
FAX 425-822-8384 / info@inwusa.com

4620 Northgate Boulevard, Suite 170
Sacramento, CA 95834 USA
916-922-2900
FAX 916-648-7766 / inwsw@inwusa.com

1-800-PRO-WELL
WWW.INWUSA.COM

