



K-NL304K



K-NL308K

H.264 / JPEG

**FULL  
HD**  
Full High Definition  
1080/30p

## 4 ch 4 PoE (K-NL304K)/ 8 ch 8 PoE (K-NL308K) Network Video Recorder

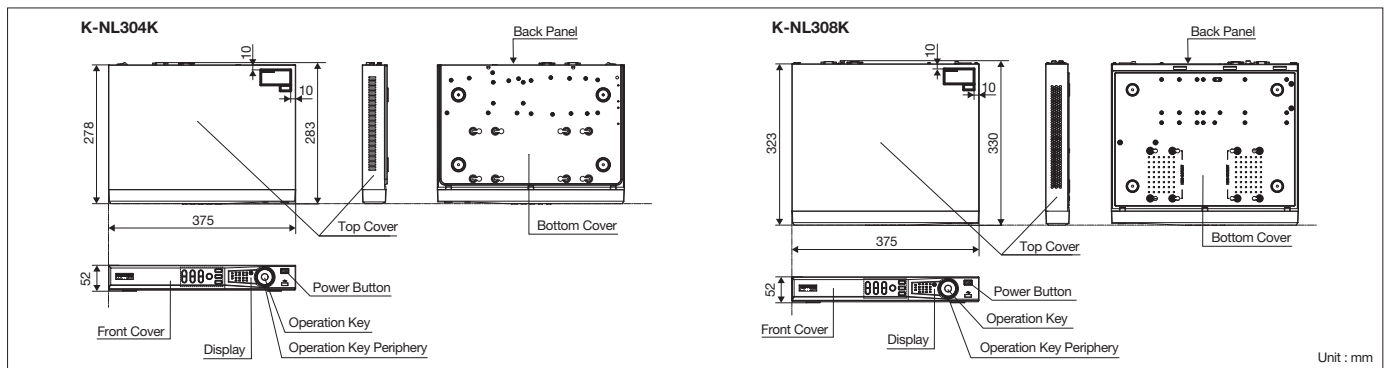
### Key Features

- Up to 4 (K-NL304K) / 8 (K-NL308K) channel with 1080p realtime live view
- H.264 / MJPEG dual codec decoding
- Max 200 Mbps incoming bandwidth
- HDMI / VGA simultaneous video output
- 4 / 8 channel synchronous realtime playback
- Support 2 SATA HDDs up to 8 TB, 2 USB(1 USB3.0)
- 4PoE (K-NL304K), 8PoE (K-NL308K) ports
- Multiple network monitoring: Web browser, EMS (E-Series Management Software) & Mobile-EMS

## Specifications

Model	K-NL304K	K-NL308K
<b>System</b>		
Main Processor	Dual-core embedded processor	
Operating System	Embedded Linux®	
<b>Video / Audio</b>		
IP Camera Input	4 channel	8 channel
Audio	1channel Input (RCA), 1channel Output (RCA)	
<b>Display</b>		
Interface	1 HDMI, 1 VGA	
Resolution	1920 × 1080, 1280 × 1024, 1280 × 720, 1024 × 768	
Display Split	1/4	1/4/8/9
OSD	Camera title, Time, Video loss, Camera lock, Motion detection, Recording	
<b>Recording</b>		
Compression	H.264 / MJPEG	
Resolution	3Mp (2048 × 1536) / 1080p (1920 × 1080) / 720p (1280 × 720) / D1 (704 × 480) / VGA (640 × 480) / CIF (352 × 240) & etc.	
Maximum Bandwidth	Total 200 Mbps or less	
Bit Rate	48~ 8192 kbps	
Record Mode	Manual, Schedule (Regular (Continuous), VMD, Alarm), Stop	
Record Interval	Recording duration: 1~120 min (default: 60 min), Pre-record: 1~30 sec, Post-record: 10~300 sec	
<b>Video Detection &amp; Alarm</b>		
Alarm Action	Recording, PTZ, Tour, Alarm, Video Push, Email, FTP, Buzzer & Alarm pop-up	
Video Detection	Video Motion Detection, Video Loss & Camera Blank	
Alarm Input	4 channel	
Relay Output	2 channel	
<b>Playback &amp; Backup</b>		
Sync Playback	1/4	1/4/8
Search Mode	Time/Date, Alarm, VMD & Exact search (accurate to second), Smart search	
Playback Function	Play, Pause, Stop, Rewind, Fast play, Slow play, Next file, Previous file, Next camera, Previous camera, Full screen, Repeat, Backup selection, Digital zoom	
Backup Mode	USB Device / Network	
<b>Network</b>		
Ethernet	1 RJ45 port (10/100/1000 Mbps)	
PoE	4 ports (IEEE802.3at)	8 ports (IEEE802.3at)
Network Function	HTTP, TCP/IP, IPv4/IPv6, UPnP, RTSP, UDP, SMTP, NTP, DHCP, DNS, IP Filter, PPPoE, DDNS, FTP, Alarm Server, IP Search	
Max. User Access	128 users	
Smart Phone	iPhone, iPad, Android™	
<b>Storage</b>		
Internal HDD	2 SATA ports, up to 8 TB	
<b>External Interface</b>		
USB	2 ports (1 Rear USB3.0, 1 Front USB2.0)	
RS232	1 port, For PC communication & Keyboard	
RS485	1 port, For PTZ control	
<b>General</b>		
Safety / EMS Standard	<Safety> : CE, IEC60950-1 <EMC> : EN55022 Class B, EN55024	
Power Supply	DC12 V / 4 A (For main unit) DC48 V / 1.04 A (For PoE)	AC 100 ~ 240 V, 50/60 Hz (For main unit)
Power Consumption	NVR: 20 W (without HDD) PoE: Max 25.5 W for single port	NVR: 60 W (without HDD)
Ambient Operating Temperature/ Humidity	-10°C ~ +55°C / 10% ~ 90%RH / 86~106 kpa	
Dimension (W × D × H)	375 mm (W) × 278 mm (D) × 52 mm (H)	375 mm (W) × 323 mm (D) × 52 mm (H)
Weight	2.0 kg (without HDD)	2.5 kg (without HDD)

## Appearance



### Trademarks and registered trademarks

- Linux® is the registered trademark of Linus Torvalds in the U.S. and other countries.
- iPad, iPhone and iPod touch are registered trademarks of Apple Inc.
- Android is a trademark of Google Inc.

### Important

- Safety Precaution: Carefully read the Important Information, Installation Guide and operating instructions before using this product.
- Panasonic cannot be responsible for the performance of the network and/or other manufacturers' products used on the network.

- Masses and dimensions are approximate.
- Specifications are subject to change without notice.

DISTRIBUTED BY:

# Panasonic

<http://security.panasonic.com/pss/security/library/e-series.html>

(2A-127AA)

# K-EF134L Series

K-EF134L02E (Focal Length 2.8 mm)

K-EF134L03E (Focal Length 3.6 mm)

K-EF134L06E (Focal Length 6.0 mm)



## 1.3 Megapixel 720p Weatherproof Mini Dome Camera Equipped with IR LED

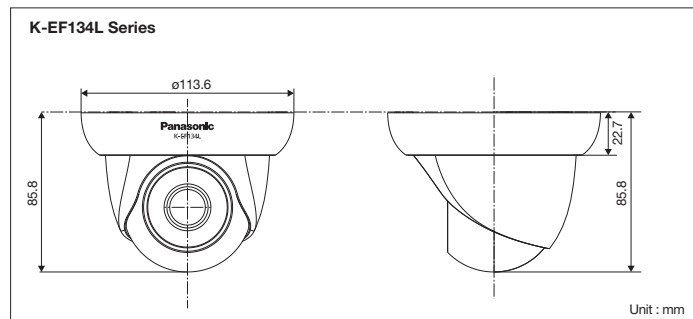
### Key Features

- 1/3 type 1.3 Megapixel MOS Sensor
- H.264 & MJPEG dual-stream encoding
- 30fps@1.3 M (1280 × 960) & 30fps@720p (1280 × 720)
- Day / Night (IR), AWB, AGC, BLC
- Max. IR LEDs length 20 m
- 2.8 mm / 3.6 mm / 6.0 mm fixed lens
- IP66 rated water and dust resistant.
- PoE

## Specifications

Model	K-EF134L02E	K-EF134L03E	K-EF134L06E
<b>Camera</b>			
Image Sensor	1/3 type 1.3 Megapixel progressive scan MOS Sensor		
Effective Pixels	1280 (H) × 960 (V)		
Scanning System	Progressive		
Electronic Shutter Speed	Auto / Manual, 1/3 ~ 1/100,000 s		
Min. Illumination	0.05 lx / F1.2 (Color), 0.025 lx / F1.2 (B/W); 0 lx / F1.2 (IR on)		
S/N Ratio	More than 50 dB		
Video Output	N/A		
<b>Camera Features</b>			
Max. IR LEDs Length	20 m		
Day/Night	Auto (IR) / Color / B/W		
Backlight Compensation	BLC / HLC / WDR		
White Balance	Auto / Manual		
Gain Control	Auto / Manual		
Noise Reduction	3D		
Privacy Masking	Up to 4 areas		
<b>Lens</b>			
Focal Length	2.8 mm	3.6 mm	6.0 mm
Max Aperture	F2.0	F1.8	F1.8
Angle of View	H: 89°	H: 70°	H: 46.5°
Lens Type	Fixed lens		
<b>Video</b>			
Compression	H.264 / MJPEG		
Resolution	1.3 M (1280 × 960) / 720p (1280 × 720) / D1 (704 × 480) / CIF (352 × 240)		
Frame Rate	Stream (1)	1.3 M / 720p (1 ~ 30fps)	
	Stream (2)	D1/CIF (1 ~ 30fps)	
Bit Rate	H.264: 32 K ~ 8192 Kbps		
<b>Network</b>			
Ethernet	RJ45 (10/100Base-T)		
Protocol	IPv4/IPv6, HTTP, HTTPS, SSL, TCP/IP, UDP, UPnP, ICMP, IGMP, SNMP, RTSP, RTP, SMTP, NTP, DHCP, DNS, PPPoE, DDNS, FTP, IP Filter, QoS, Bonjour, Onvif compatible		
Max. User Access	20 users		
Smart Phone	iPhone, iPad, Android™		
<b>General</b>			
EMS Standard	EN55022 Class B, EN55024		
Power Supply	DC12 V, PoE (IEEE802.3af)		
Power Consumption	Max 4 W		
Ambient Operating Temperature/ Humidity	-20°C ~ +60°C / Less than 95% RH		
Water and Dust Resistance	IP66		
Vandal Resistance	N/A		
Dimensions	Φ113.6 mm × 85.8 mm		
Weight	0.29 kg		

## Appearance



### Trademarks and registered trademarks

- iPad, iPhone and iPod touch are registered trademarks of Apple Inc.
- Android is a trademark of Google Inc.
- ONVIF and the ONVIF logo are trademarks of ONVIF Inc.

### Important

- Safety Precaution: Carefully read the Important Information, Installation Guide and operating instructions before using this product.
- Panasonic cannot be responsible for the performance of the network and/or other manufacturers' products used on the network.

- Masses and dimensions are approximate.
- Specifications are subject to change without notice.

DISTRIBUTED BY:

# Panasonic

<http://security.panasonic.com/pss/security/library/e-series.html>

(2A-128BA)

# Panasonic

## HD Weatherproof Network Camera K-EW114L Series

K-EW114L03E (Focal Length 3.6 mm)

K-EW114L06E (Focal Length 6.0 mm)

K-EW114L08E (Focal Length 8.0 mm)



H.264 JPEG

HD  
High Definition  
720/30p

day/night  
IR  
removable

IR LED

IP66  
standard

## 1.3 Megapixel 720p Weatherproof Camera Equipped with IR LED

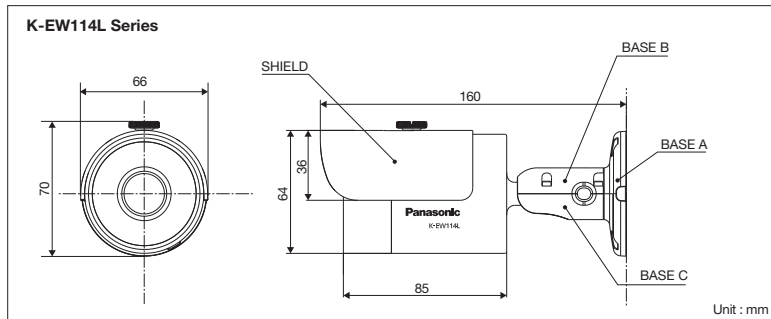
### Key Features

- 1/3 type 1.3 Megapixel MOS Sensor
- H.264 & MJPEG dual-stream encoding
- 30fps@1.3 M (1280 × 960) & 30fps@720p (1280 × 720)
- Day / Night (IR), AWB, AGC, BLC
- Max. IR LEDs length 30 m
- 3.6 mm / 6.0 mm / 8.0 mm fixed lens
- IP66 rated water and dust resistant.
- PoE

## Specifications

Model	K-EW114L03E	K-EW114L06E	K-EW114L08E
<b>Camera</b>			
Image Sensor	1/3 type 1.3 Megapixel progressive scan MOS Sensor		
Effective Pixels	1280 (H) × 960 (V)		
Scanning System	Progressive		
Electronic Shutter Speed	Auto / Manual, 1/3 ~ 1/100,000		
Min. Illumination	0.05 lx / F1.2 (Color), 0.025 lx / F1.2 (B/W); 0 lx / F1.2 (IR on)		
S/N Ratio	More than 50 dB		
Video Output	N/A		
<b>Camera Features</b>			
Max. IR LEDs Length	30 m		
Day/Night	Auto (IR) / Color / B/W		
Backlight Compensation	BLC / HLC / WDR		
White Balance	Auto/Manual		
Gain Control	Auto/Manual		
Noise Reduction	3D		
Privacy Masking	Up to 4 areas		
<b>Lens</b>			
Focal Length	3.6 mm	6.0 mm	8.0 mm
Max Aperture	F1.8		
Angle of View	H: 70°		H: 46.5°
Lens Type	Fixed lens		
<b>Video</b>			
Compression	H.264 / MJPEG		
Resolution	1.3 M (1280 × 960) / 720p (1280 × 720) / D1 (704 × 480) / CIF (352 × 240)		
Frame Rate	Stream (1)	1.3 M / 720p (1 ~ 30fps)	
	Stream (2)	D1/CIF (1 ~ 30fps)	
Bit Rate	H.264: 32K ~ 8192 Kbps		
<b>Network</b>			
Ethernet	RJ45 (10/100Base-T)		
Protocol	IPv4/IPv6, HTTP, HTTPS, SSL, TCP/IP, UDP, UPnP, ICMP, IGMP, SNMP, RTSP, RTP, SMTP, NTP, DHCP, DNS, PPPoE, DDNS, FTP, IP Filter, QoS, Bonjour, Onvif compatible		
Max. User Access	20 users		
Smart Phone	iPhone, iPad, Android™		
<b>General</b>			
EMS Standard	EN55022 Class B, EN55024		
Power Supply	DC12 V, PoE (IEEE802.3af)		
Power Consumption	Max 5 W		
Ambient Operating Temperature/ Humidity	-20°C ~ +60°C / Less than 95% RH		
Water and Dust Resistance	IP66		
Vandal Resistance	N/A		
Dimensions	70 mm × 66 mm × 160 mm		
Weight	0.5 kg		

## Appearance



### Trademarks and registered trademarks

- iPad, iPhone and iPod touch are registered trademarks of Apple Inc.
- Android is a trademark of Google Inc.
- ONVIF and the ONVIF logo are trademarks of ONVIF Inc.

### Important

- Safety Precaution: Carefully read the Important Information, Installation Guide and operating instructions before using this product.
- Panasonic cannot be responsible for the performance of the network and/or other manufacturers' products used on the network.

- Masses and dimensions are approximate.
- Specifications are subject to change without notice.

DISTRIBUTED BY:

# Panasonic

<http://security.panasonic.com/pss/security/library/e-series.html>

(2A-129BA)